

■ HyperView ■



Information Systems
for spatial management



UrbanView

www.hyperview.pl



Providing convenient access to spatial information

We build advanced IT systems supporting the work of local government units. The main objective of our activity is to support the development of administration in areas related to the use of geoinformation.

We are a harmonious team of professionals, full of enthusiasm and programming knowledge. Our applications combine a refined layer of business logic with a functional user interface.

For 20 years, together with our clients, we have been developing proprietary, comprehensive and modern spatial information systems and systems supporting administrative proceedings. Currently, our system is the most modern IT solution for spatial management on Polish market. Our experience, specialization and openness to individual clients make us a trustworthy partner for cooperation.

Thanks to the reliability of our work, we enjoy the trust of many regular customers. We invite to take advantage of our offer and join their group.

HyperView Team



Access to spatial information

Services of access to spatial information, including information from geodetic and cartographic resources and any thematic registers and records.

- HyperView software allows you to efficiently share, search and analyze spatial data in a web browsers.
- It acts as a spatial and descriptive data warehouse that helps to combine information regardless of its origin (e. g. government departments and papers, other organizational units) and present them in the form of interactive maps and charts, generated on-line according to the needs of users.
- It enables the implementation of the Directive 2007/2/EC of the European Parliament and of the Council of 14 March 2007 establishing an Infrastructure for Spatial Information in the European Community (INSPIRE) with the provisions of the Polish Acts related to this subject.



Geoportals and web maps

Spatial information publication services for residents, support for regional development and promotion.

- Our solutions allow for easy creation of geo-portals and city plans, whose task is to make spatial data available to Internet users.
- Geoportals are attractive and modern showcases of the local government units.
- The main part is an interactive map and a toolkit to view, search and analyze information.



Handling of administrative requests, proceedings and cases

Services of electronic handling of administrative requests, document management, keeping registers and records, and conducting administrative proceedings.

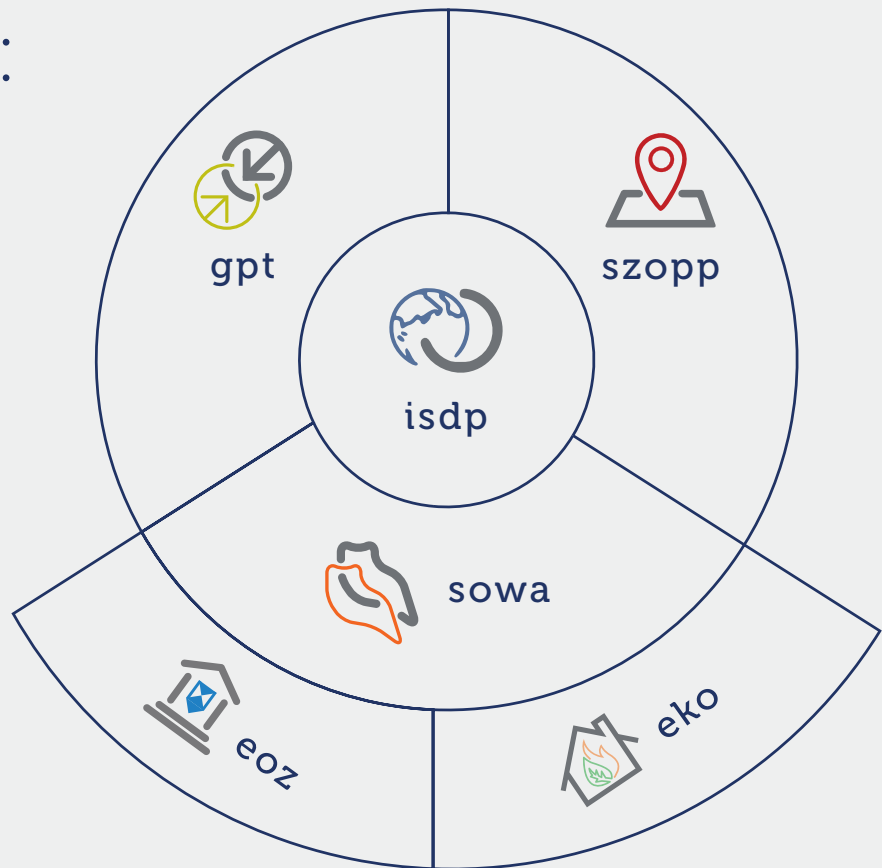


- The system facilitates the handling of administrative requests submitted by clients, supervising the execution of cases and documenting proceedings. On the basis of the information gathered, you can efficiently handle complex administrative processes and make decisions in a convenient and transparent way.
- The special feature that distinguishes our products is the full connection of the cases and issued decisions with the location, specified on the map and with the city's geoportals. This is an important element in the process of building the information society. It allows to do matters without visiting the office.
- The application allows to reflect the organizational structure of the office and to decree cases to the appropriate inspectors. The forms facilitate the entry of the necessary information and the programme itself recalls the approaching final date of the decision on the case.

Benefits of UrbanView software implementation:



PRODUCTS:



Additional functionalities:



Integration of all applications into one platform



Uniform user authentication, including for external ActiveDirectory systems



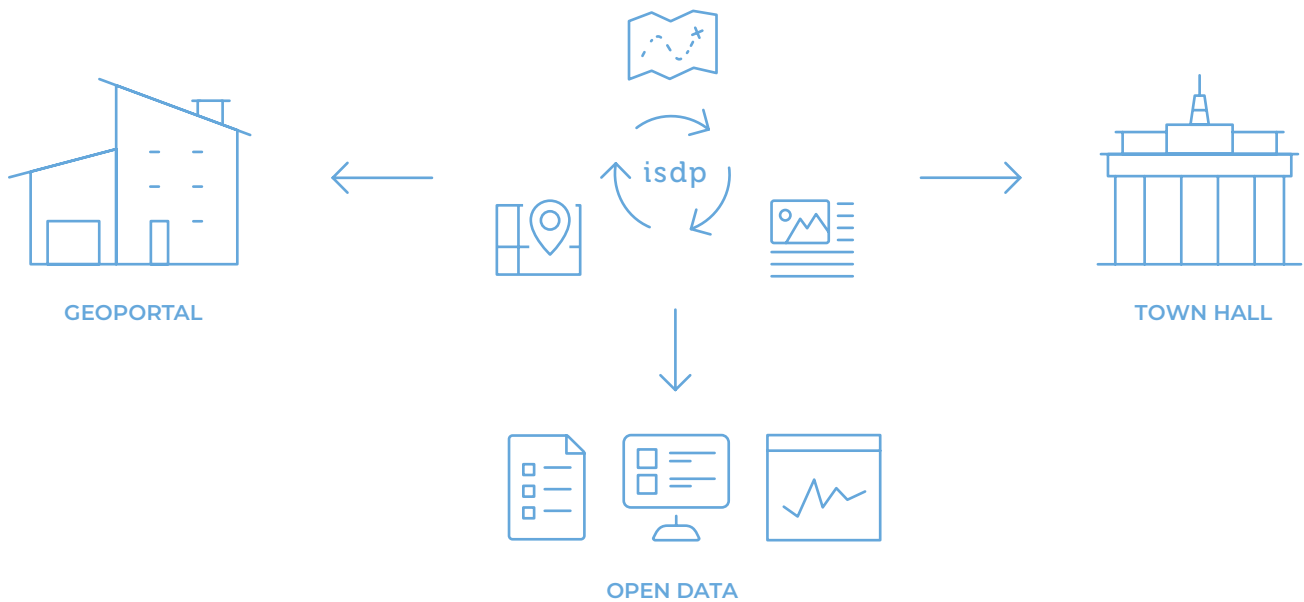
Expanded system of granting users and groups access rights to information, in accordance with the Act on Personal Data Protection



isdP

Internet Spatial Data Server

Homogeneous and structured data is the basis for proper management processes. The Internet Spatial Data Server (Polish acronym: ISDP) is the central element of the UrbanView services platform.



- The spatial data server is the basis for a network of services and microservices, carrying out various activities on data with spatial location. Individual services can be developed by HyperView or external companies.
- It integrates and processes spatial data from multiple sources, presents them on a map and makes them available to external applications.
- It works as a central spatial data warehouse, in which the knowledge about geographically located objects is gathered.



gpt

Geoportal Toolkit

The map application in a web browser.
Modern geoportal for office workers and residents.



**ELECTORAL
SEARCH ENGINE**



**CREATING SKETCHES
ON THE CITY MAP**



**FINDING THE
SHORTEST ROUTE**



**SEARCHING FOR STREETS,
BUILDINGS, MONUMENTS,
MONUMENTS, SERVICES**



**SPATIAL
ANALYSES**



**INFORMATION
ABOUT THE CITY**

- A powerful, functional tool that works in a web browser.
- Includes more than 120 functions.
- Enables the creation of thematic portals (for residents, investors, electoral information) strictly adapted to the nature of the published information.
- Shows current data in real time.
- Allows integration with multiple data sources according to open standards.
- Facilitates the publication of Open Data for use by residents.
- It gives the possibility to customize the appearance and functionality to the needs of the users.
- Provides data in a convenient and secure way.
- Available special version for the visually impaired.



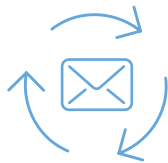
sowa

Administrative request handling system

Application supports the activities of the Office in the efficient execution of applications, conducting proceedings and issuing administrative decisions.



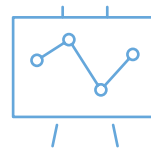
**INCOMING
REQUESTS**



**INTEGRATION
WITH EDMS**



**STAKEHOLDER
REQUESTS**



**ANALYSES, REPORTS,
SUMMARIES**



**ADMINISTRATIVE
DECISIONS**

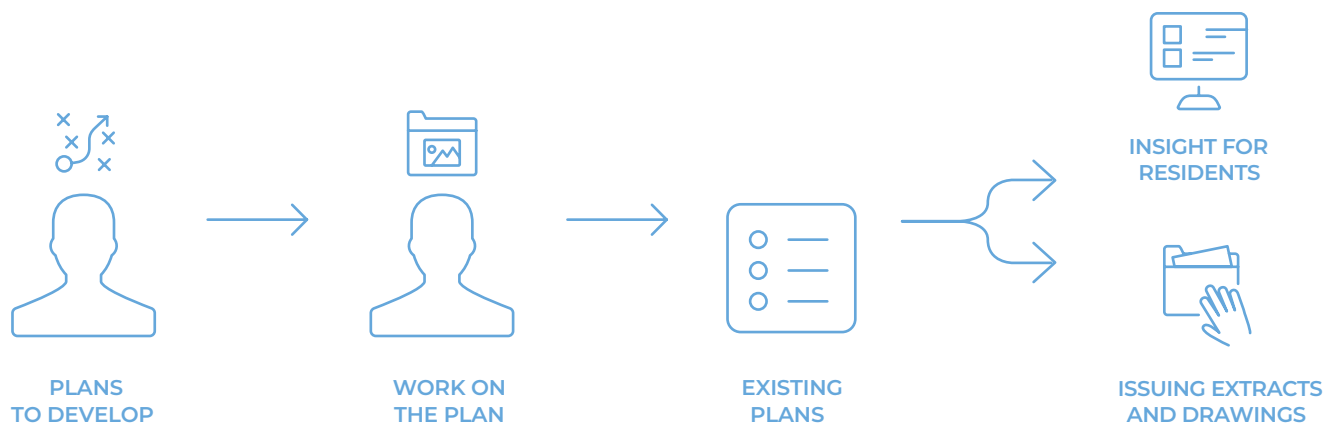
- Integrates with Electronic Document Management Systems.
- Supports the substantive work in a way that is adapted to the specifics of the individual departments.
- Facilitates and accelerates the decision making process.
- Allows to monitor the progress of dealing with the matters in real time.
- Provides the possibility of integration with other systems and e-services.
- Supports locating issues on the map of the city, linking them with the geometry of objects they concern.
- Visualizes the issues on the map.
- Archives and makes documents digitally accessible.



szopp

Integrated Supporting System of Land Use Planning

The very first solution in Poland that automates the process of preparing and publishing of Land Use Plans.



- A complete information system for the land use planning departments.
- Supports the linking of land-use planning elements with the elements listed in the resolution.
- Verifies the correctness of the introduced relationships.
- Automatically modifies pre-existing planning data when approving a new plan, independently creating new versions of objects changed by resolutions and saving the dates of validity of individual versions.
- Automates and simplifies the process of publishing land use plans in vector and raster form.
- Generates ready-made extracts and extracts documents.
- Search for plans and zones valid for a given plot on a given date.



eko

ECO

Helps fight smog. Supports the administration in inventory of heat sources harmful to the environment and handling of applications to subsidize their exchange.

- Completely operates heat exchange co-financing programmes.
- Keeps records of heat sources, locates them on a map and defines a profile of the heating methods used by residents.
- Supports the handling of applications for heat exchange co-financing.
- Identifies attempts to obtain multiple financing for the same property.
- Print ready-made contracts on the basis of any templates.
- Generates reports showing the effectiveness of the implementation of the co-financing programmes and the decrease in the number of non-ecological heat sources.



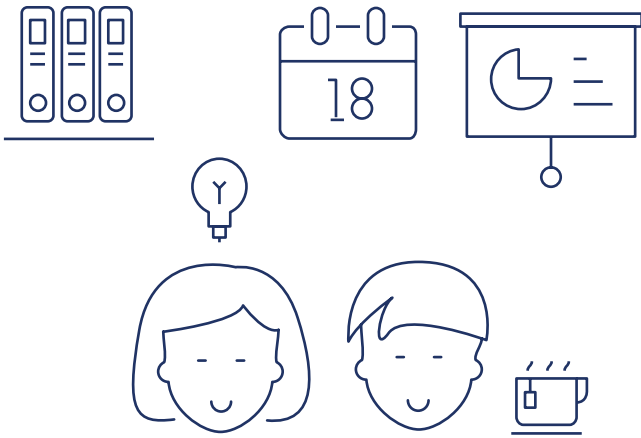
eoż

Record of Historical Objects

Helps to care for cultural heritage. Supports the administration in maintaining historical and archaeological objects and cemeteries.

- Enables the municipal register of monuments, archaeological objects and cemeteries to be kept.
- Connects objects from the document and photo archive.
- Locates objects on specific plots and at a given address.
- It stores data on the characteristic features of the monument and its history.
- Generates reports and summaries.

How we act:



CONFIGURATION

We support the development of innovative concepts and help to put them into practice with the right configuration of our tools. We can advise you on how to build intuitive user interfaces that are consistent with commonly used solutions.

TRAININGS

We supplement the implementation of our products with training, so that new users can learn how to use them in the most effective way possible. For users who are already familiar with our systems, we offer training courses that include newly added functions and tools.

SUPPORT AND MAINTENANCE

Our experts provide merchandise support even after the implementation is completed. Products are covered by a temporary warranty. Customers who need legal certainty in the operation of the system may also purchase assistance services, under which we monitor the operation of the system on an ongoing basis, remove any noticed inconveniences and carry out periodic reviews of the correctness of operation.

IMPLEMENTATION

As part of the implementation, we install the necessary software and enter the data held by the customer into the system. We closely cooperate with the customer's IT department, monitoring the operation of the infrastructure and suggesting the directions of its development.

RECOGNITION OF THE NEEDS

We begin our work by recognizing the needs of the customer and the specific nature of the tasks we carry out. During the meetings we present the possibilities of our IT system, advise on the best solutions and agree on the construction of new tools aimed at improving the comfort of daily work.

Why to choose us:

TEAM

Programmers, project managers, implementers, testers - they spare no effort to meet the expectations of customers in the shortest possible time and provide them with a product of the highest quality.

REQUIREMENTS

Our software is developed with the needs of our customers in mind. Constant contact allows us to create new solutions and adapt existing ones. Thanks to this, working with our products becomes more and more effective.

CREATIVITY

The people responsible for product development, using their experience, search for new solutions and implement them in practice.

EXPERIENCE

We have already completed several dozen successful projects to improve the operation of local government units.

BEST VALUE FOR MONEY

All our solutions are characterized by the highest quality at an affordable price.

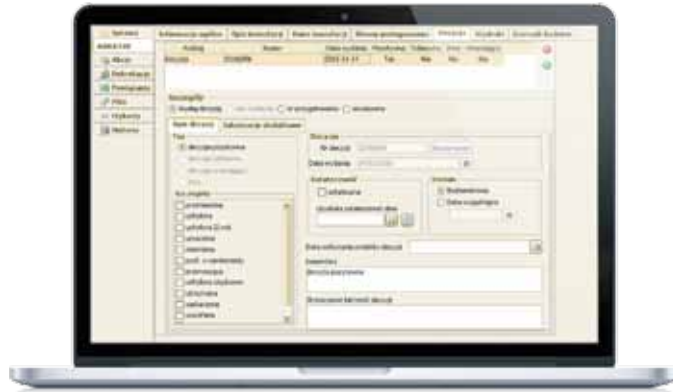
SOFTWARE

We are constantly improving the code of our programs, increasing their efficiency and using the latest tools and standards.

The UrbanView system facilitates the work of thousands of users. It operates successfully in larger and smaller local government units.

Our clients:

- Bełchatów
- Bytom
- Gliwice
- Jastrzębie Zdrój
- Jaworzno
- Kielce
- Kraków
- Mysłowice
- Piekary Śląskie
- Sosnowiec
- Szczecin
- Tarnów
- Tychy
- powiat oleśnicki



sowa



eoZ



gpt

We invite to cooperation

HyperView sp. z o.o.



Office:

ul. Chorzowska 44 b / pok. 403

Gliwice, 44-100



+48 **32 420 73 54**



sekretariat@hyperview-gl.pl



www.hyperview.pl

